

BRADFORD COLLECTION





Style **9031**
4 3/4" X 15/16"
OP = 1 15/16"
IP = 1 3/8"



Shown in Satin Bronze (**SB**)
Near Actual Size

Left Hand Exterior



Passage Set
7.25mm on the Diamond
9031/77 + Finish



Multi Point Set
8mm on the Square
9031/28 + Finish

Right Hand Interior

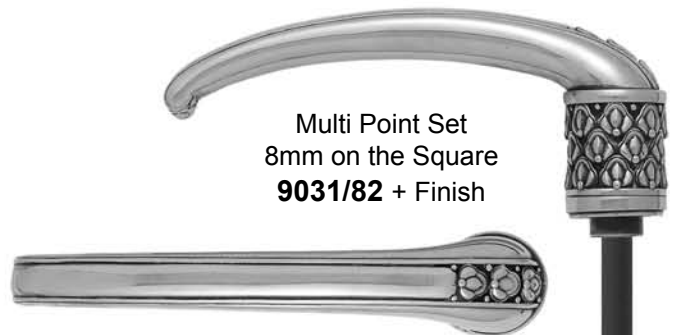


Single Left Hand Passage
9031/71 + Finish

Right Hand Exterior



Single Right Hand Passage
9031/17 + Finish



Multi Point Set
8mm on the Square
9031/82 + Finish

Left Hand Interior



Style **8861**
Dia = 2 3/8"
OP = 2 3/16"
IP = 15/16"



Shown in Polished Bronze (**PB**)
Near Actual Size



Entry Door Set
8mm on the Square
8861/88 + Finish

Passage Set
7.25mm on the Diamond
8861/77 + Finish



Entry - Interior Single
8mm on the Square
8861/18 + Finish

Entry - Exterior Single
with attached 8mm Spindle
8861/28 + Finish

Passage Single
7.25mm on the Diamond
8861/17 + Finish



Style **9003**
Dia = 2 3/8"
OP = 2 1/8"
IP = 7/8"



Shown in Polished Bronze (**PB**)
Near Actual Size



Entry Door Set
8mm on the Square
9003/88 + Finish

Passage Set
7.25mm on the Diamond
9003/77 + Finish



Entry - Interior Single
8mm on the Square
9003/18 + Finish

Entry - Exterior Single
with attached 8mm Spindle
9003/28 + Finish

Passage Single
7.25mm on the Diamond
9003/17 + Finish



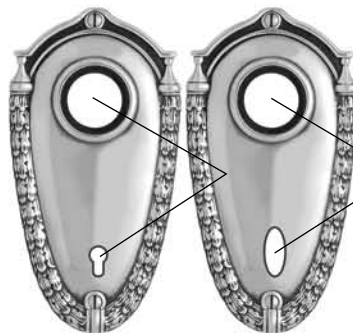
Style **8895**
 4 15/16" X 2 5/8"
 Custom Drill Only
 Shown in Polished Bronze (**PB**)
 Near Actual Size



Passage Trim Set **8895/521** + Finish
 Dummy Set **8895/522** + Finish
 Trim w/ S Plate **8895/523** + Finish + Hand
 Trim/Mortise/S Plate **8895/524** + Finish + Hand



Passage Trim Single **8895/511** + Finish
 Dummy Single **8895/512** + Finish
 Trim w/ S Plate **8895/513** + Finish + Hand
 Trim/Mortise/S Plate **8895/514** + Finish + Hand

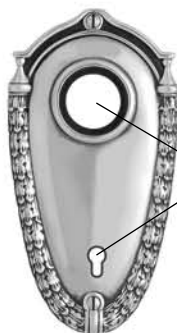


On Actual Piece
 the Spacing is
 2 1/4" Center to Center

Privacy Trim Set **8895/621** + Finish
 Trim w/ S Plate **8895/623** + Finish + Hand
 Trim/Mortise/S Plate **8895/624** + Finish + Hand

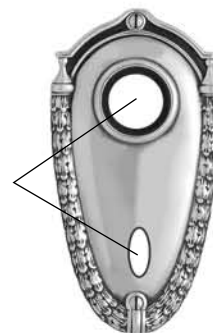


Style **9070/91** + Finish
 1 3/8" X 1 1/16"
 OP = 3/4"
 Polished Bronze (**PB**)
 Near Actual Size
 Additional T Turns Styles Available



On Actual Piece
 the Spacing is
 2 1/4" Center to Center

Trim Keyhole **8895/711** + Finish
 Trim w/ S Plate **8895/713** + Finish + Hand
 Trim/Mortise/S Plate **8895/714** + Finish + Hand



Trim T/Turn **8895/811** + Finish
 Trim w/ S Plate **8895/813** + Finish + Hand
 Trim/Mortise/S Plate **8895/814** + Finish + Hand

Style **8755**
3" X 2 9/16"



Shown in
Polished Bronze (**PB**)
Near Actual Size



Passage Trim Set **8755/521** + Finish
Dummy Set **8755/522** + Finish
Trim w/Passage S Plate **8755/523** + Finish + Hand
Trim/Passage Mortise/S Plate **8755/524** + Finish + Hand
Trim/Privacy S Plate **8755/525** + Finish + Hand
Trim/Privacy Mortise/S Plate **8755/526** + Finish + Hand

Passage Trim Single **8755/511** + Finish
Dummy Single **8755/512** + Finish
Trim/Passage S Plate **8755/513** + Finish + Hand
Trim/Passage Mortise/S Plate **8755/514** + Finish + Hand
Trim/Privacy S Plate **8755/515** + Finish + Hand
Trim/Privacy Mortise/S Plate **8755/516** + Finish + Hand



Style **9137**
Dia = 2 1/8"
Custom Drill Only



Shown in Polished Bronze (**PB**)
Near Actual Size



Passage Trim Set **9137/521** + Finish

Dummy Set **9137/522** + Finish

Trim w/Passage S Plate **9137/523** + Finish + Hand
Trim/Passage Mortise/S Plate **9137/524** + Finish + Hand
Trim/Privacy S Plate **9137/525** + Finish + Hand
Trim/Privacy Mortise/S Plate **9137/526** + Finish + Hand

Passage Trim Single **9137/511** + Finish

Dummy Single **9137/512** + Finish

Trim/Passage S Plate **9137/513** + Finish + Hand
Trim/Passage Mortise/S Plate **9137/514** + Finish + Hand
Trim/Privacy S Plate **9137/515** + Finish + Hand
Trim/Privacy Mortise/S Plate **9137/516** + Finish + Hand



Style **8993**
Dia = 2 1/4"
Custom Drill Only



Shown in
Polished Bronze (**PB**)
Near Actual Size



Passage Trim Set **8993/521** + Finish

Dummy Set **8993/522** + Finish

Trim w/Passage S Plate **8993/523** + Finish + Hand

Trim/Passage Mortise/S Plate **8993/524** + Finish + Hand

Trim/Privacy S Plate **8993/525** + Finish + Hand

Trim/Privacy Mortise/S Plate **8993/526** + Finish + Hand

Passage Trim Single **8993/511** + Finish

Dummy Single **8993/512** + Finish

Trim/Passage S Plate **8993/513** + Finish + Hand

Trim/Passage Mortise/S Plate **8993/514** + Finish + Hand

Trim/Privacy S Plate **8993/515** + Finish + Hand

Trim/Privacy Mortise/S Plate **8993/516** + Finish + Hand



Style **9251**
 2 7/8" X 2 5/8"
 Custom Drill Only



Shown in
 Polished Bronze (**PB**)
 Near Actual Size



Passage Trim Set **9251/521** + Finish
 Dummy Set **9251/522** + Finish
 Trim w/Passage S Plate **9251/523** + Finish + Hand
 Trim/Passage Mortise/S Plate **9251/524** + Finish + Hand
 Trim/Privacy S Plate **9251/525** + Finish + Hand
 Trim/Privacy Mortise/S Plate **9251/526** + Finish + Hand

Passage Trim Single **9251/511** + Finish
 Dummy Single **9251/512** + Finish
 Trim/Passage S Plate **9251/513** + Finish + Hand
 Trim/Passage Mortise/S Plate **9251/514** + Finish + Hand
 Trim/Privacy S Plate **9251/515** + Finish + Hand
 Trim/Privacy Mortise/S Plate **9251/516** + Finish + Hand



Style **8996**
Shown in
Polished Bronze (**PB**)
Near Actual Size



1 7/16" X 7/8"
OP = 11/16"

1 5/8" X 1 1/8"



2" X 1 1/4"



Segmented Privacy Set
8996/63 + Finish

Segmented Keyhole
8996/71 + Finish

Segmented Rosette
8996/81 + Finish

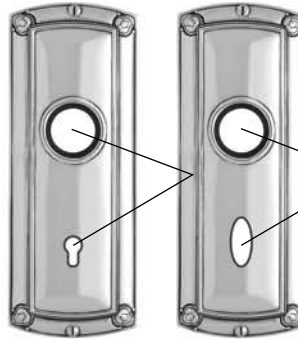


Privacy Knob
8996/91 + Finish



Passage Trim Set **9166/521** + Finish
Dummy Set **9166/522** + Finish
Trim w/ S Plate **9166/523** + Finish + Hand
Trim/Mortise/S Plate **9166/524** + Finish + Hand

Passage Trim Single **9166/511** + Finish
Dummy Single **9166/512** + Finish
Trim w/ S Plate **9166/513** + Finish + Hand
Trim/Mortise/S Plate **9166/514** + Finish + Hand



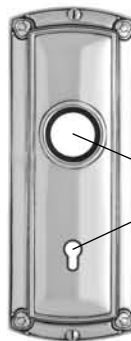
On Actual Piece
the Spacing is
2 7/8" Center to Center

Privacy Trim Set **9166/621** + Finish
Trim w/ S Plate **9166/623** + Finish + Hand
Trim/Mortise/S Plate **9166/624** + Finish + Hand

Style **9166**
6 5/16" X 2 3/8"
Custom Drill Only
Shown in Polished Bronze (**PB**)
Near Actual Size

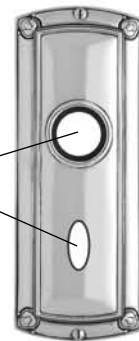


Style **9041/91** + Finish
1 3/8" X 9/16"
OP = 11/16"
Polished Bronze (**PB**)
Near Actual Size
Additional T Turns Styles Available



On Actual Piece
the Spacing is
2 7/8" Center to Center

Trim Keyhole **9166/711** + Finish
Trim w/ S Plate **9166/713** + Finish + Hand
Trim/Mortise/S Plate **9166/714** + Finish + Hand



Trim T/Turn **9166/811** + Finish
Trim w/ S Plate **9166/813** + Finish + Hand
Trim/Mortise/S Plate **9166/814** + Finish + Hand



Style **8999**
Dia = 2 9/16"



Shown in
Polished Bronze (**PB**)
Near Actual Size



Passage Trim Set **8999/521** + Finish
Dummy Set **8999/522** + Finish
Trim w/Passage S Plate **8999/523** + Finish + Hand
Trim/Passage Mortise/S Plate **8999/524** + Finish + Hand
Trim/Privacy S Plate **8999/525** + Finish + Hand
Trim/Privacy Mortise/S Plate **8999/526** + Finish + Hand

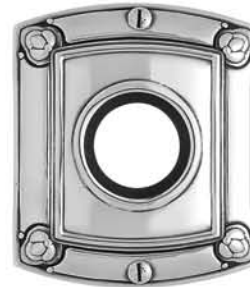
Passage Trim Single **8999/511** + Finish
Dummy Single **8999/512** + Finish
Trim/Passage S Plate **8999/513** + Finish + Hand
Trim/Passage Mortise/S Plate **8999/514** + Finish + Hand
Trim/Privacy S Plate **8999/515** + Finish + Hand
Trim/Privacy Mortise/S Plate **8999/516** + Finish + Hand



Style **9235**
3" X 2 1/2"
Custom Drill Only



Shown in
Polished Bronze (**PB**)
Near Actual Size



Passage Trim Set **9235/521** + Finish
Dummy Set **9235/522** + Finish
Trim w/Passage S Plate **9235/523** + Finish + Hand
Trim/Passage Mortise/S Plate **9235/524** + Finish + Hand
Trim/Privacy S Plate **9235/525** + Finish + Hand
Trim/Privacy Mortise/S Plate **9235/526** + Finish + Hand

Passage Trim Single **9235/511** + Finish
Dummy Single **9235/512** + Finish
Trim/Passage S Plate **9235/513** + Finish + Hand
Trim/Passage Mortise/S Plate **9235/514** + Finish + Hand
Trim/Privacy S Plate **9235/515** + Finish + Hand
Trim/Privacy Mortise/S Plate **9235/516** + Finish + Hand



Style **8998**
Shown in
Polished Bronze (**PB**)
Near Actual Size



1 7/16" X 13/16"
OP = 15/16"

1 13/16" X 1 1/8"



2" X 1 1/4"



Segmented Privacy Set
8998/63 + Finish



Segmented Keyhole
8998/71 + Finish



Segmented Rosette
8998/81 + Finish



Privacy Knob
8998/91 + Finish



Style **8998/91**
1 7/16" X 13/16"



Style **8998/91**
OP = 15/16"

Style **9161/71**
1 5/8" X 1 1/4"



Style **9161/81**
2" X 1 5/16"

Shown in Polished Bronze (PB)
Near Actual Size

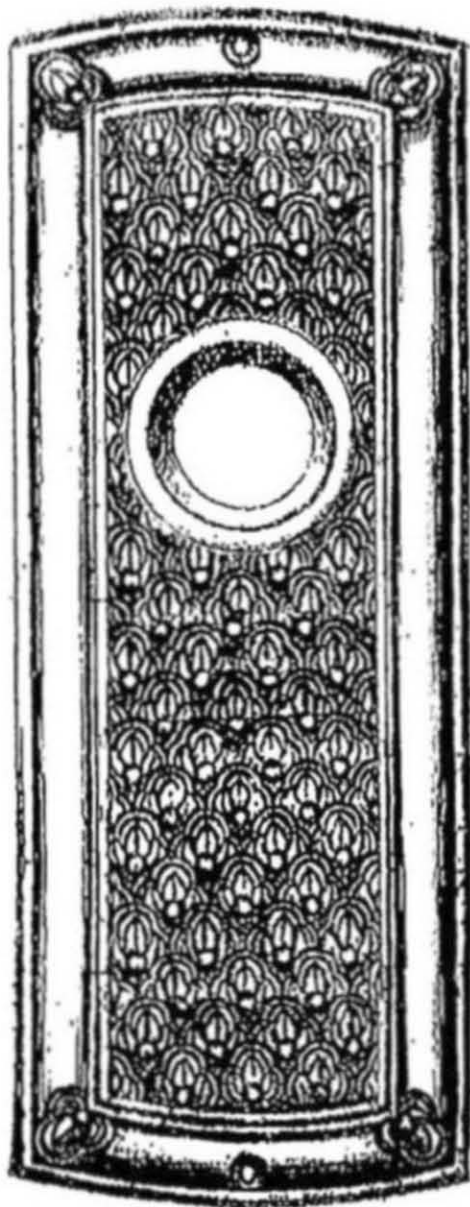


Segmented Privacy Set
9161/63 + Finish

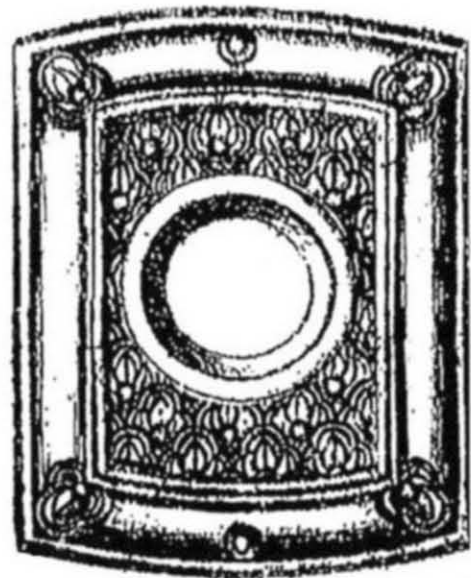
Segmented Keyhole
9161/71 + Finish

Segmented Rosette
9161/81 + Finish

Privacy Knob
8998/91 + Finish



#9355*
5 5/16" x 2 3/8"
custom drill only



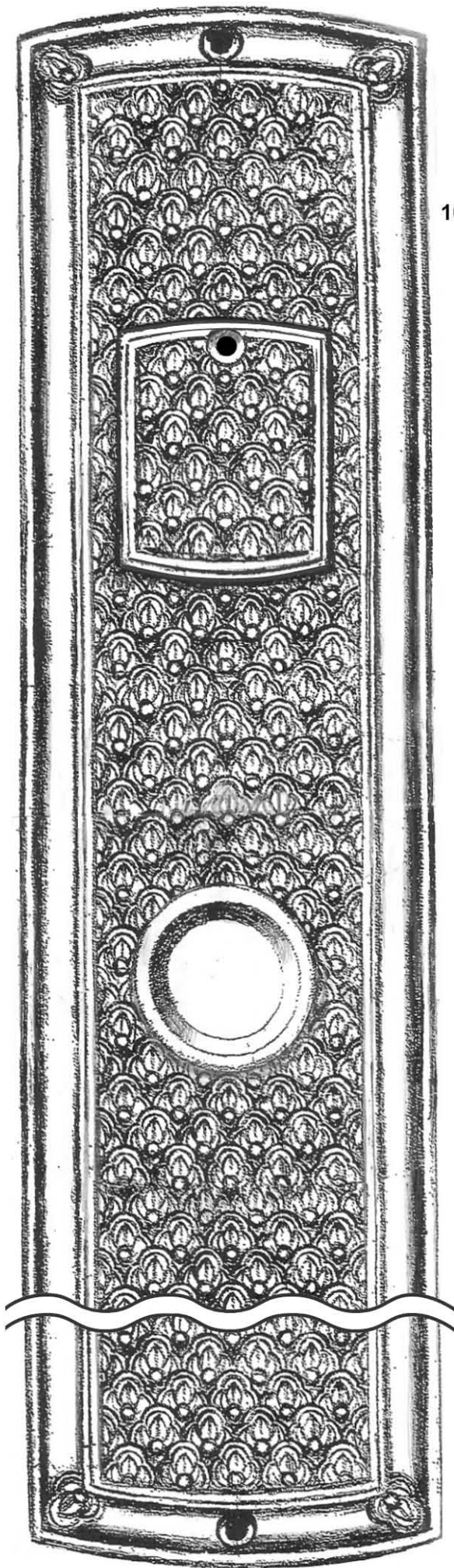
#9356*
3" x 2 1/2"
custom drill only



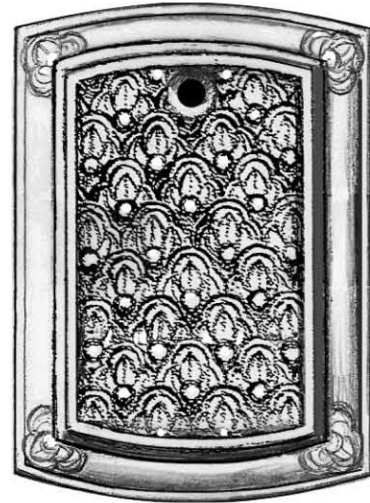
#8999
dia = 2 9/16"



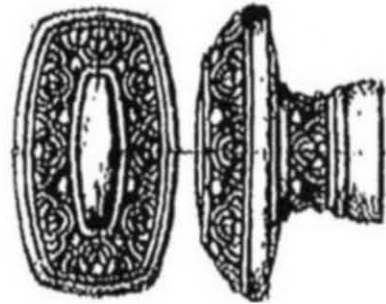
#9137
dia = 2 3/16"
custom drill only



#9420*
10 15/16" x 2 3/4"
ENTRY



#9450*
2 11/16" x 1 15/16"
ENTRY



#8998/91
1 7/16" x 13/16"
OP = 15/16"

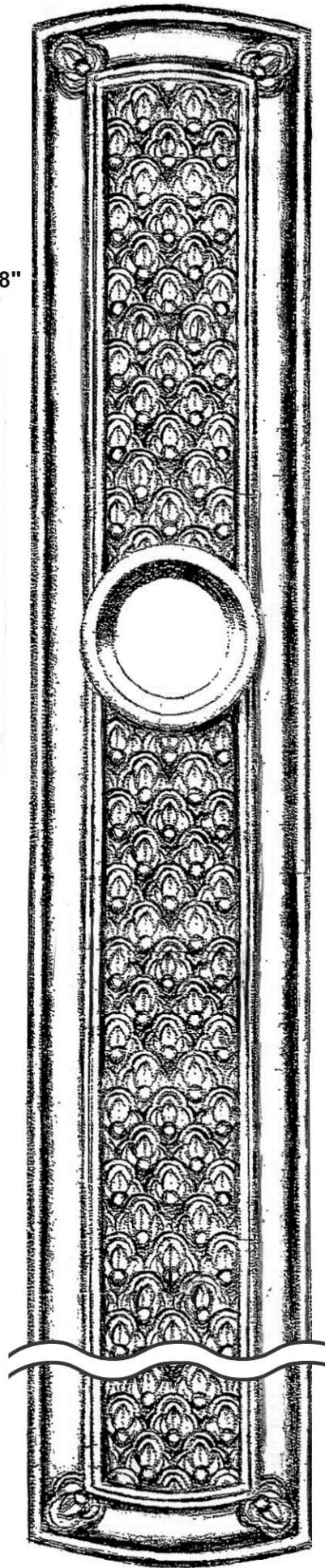


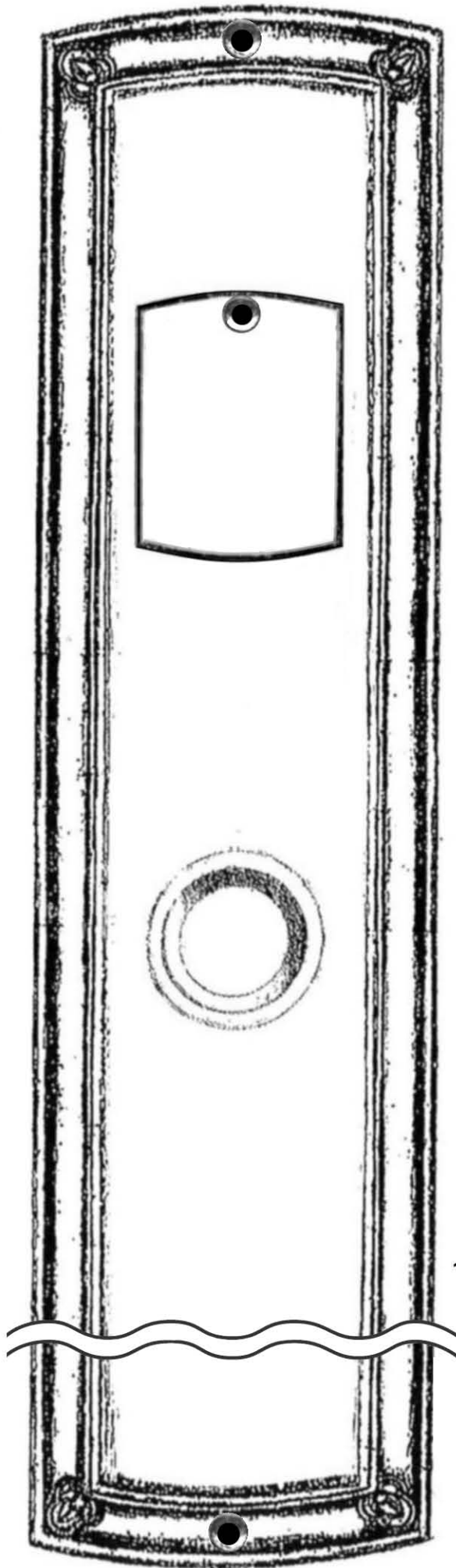
#8998/81
2" x 1 1/4"



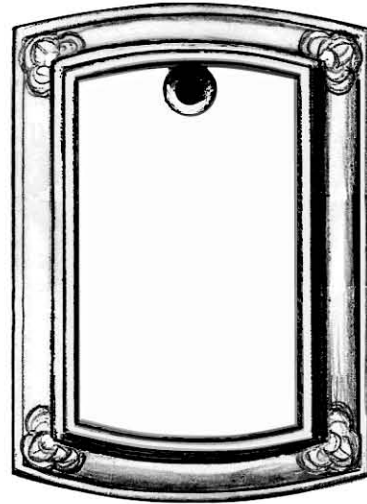
#8998/71
1 13/16" x 1 1/8"

#9354*
9 15/16" x 1 7/8"
MULTIPOINT





#9419*
10 15/16" x 2 3/4"
ENTRY



#9451*
2 11/16" x 1 15/16"
ENTRY

#9353*
9 5/8" x 1 7/8"
MULTIPOINT

