

EDGAR BEREBI

FOR
EDGAR, INC.
2003



MADE IN THE U.S.A.



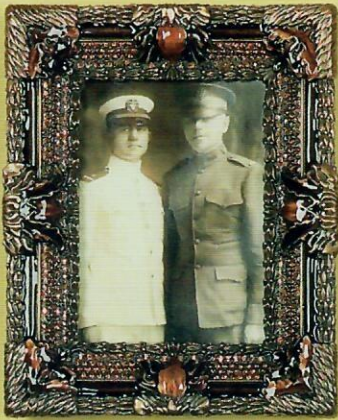
7456-3 (3 3/4" x 2 3/4")



7456-1 (3 3/4" x 2 3/4")



7456-2 (3 3/4" x 2 3/4")



7453-9 (4" x 3")



7447-1 (5" x 3 1/2")
2 Way Frame



7447-8 (5" x 3 1/2")
2 Way Frame



7440-6 (4" x 3")
2 Way Frame



7440-3 (4" x 3")
2 Way Frame



7440-9 (4" x 3")
2 Way Frame



7455-7 (5" x 3 1/2")



7455-9 (5" x 3 1/2")



7455-6 (5" x 3 1/2")



7449-3 (3" x 2 1/2")



(3" x 2 1/4")

7460-2
(3 3/4" x 2 3/4")

(3" x 2 1/4")



7449-6 (3" x 2 1/2")



7451-2 (3" Square)



7451-5 (3" Square)



7451-7 (3" Square)



7451-6 (3" Square)



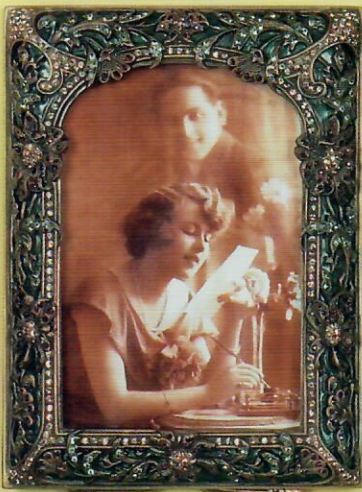
7340-3 (5" x 3 1/2")



7339-9 (6" x 4")



7340-2 (5" x 3 1/2")



7422-3 (5" x 3 1/2")



7421-3 (4" x 3")



7421-9 (4" x 3")



7452-3 (5" x 3 1/2")



7374-6 (6"x 4") 2 Way Frame



7463-6 (3" x 3 1/2")



7374-9 (6"x 4") 2 Way Frame



7362-1 (2" x 3")



7384-8 (1 3/4" Square)



7384-5 (1 3/4" Square)



7362-2 (2" x 3")



7374-5X (6" x 4") 2 Way Frame



7207-9 (3 1/2" x 2 3/4")



7207-3 (3 1/2" x 2 3/4")



7469-3 (2" x 2 3/8")



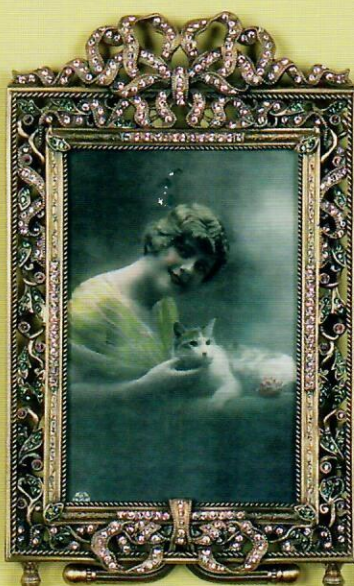
7469-9 (2" x 2 3/8")



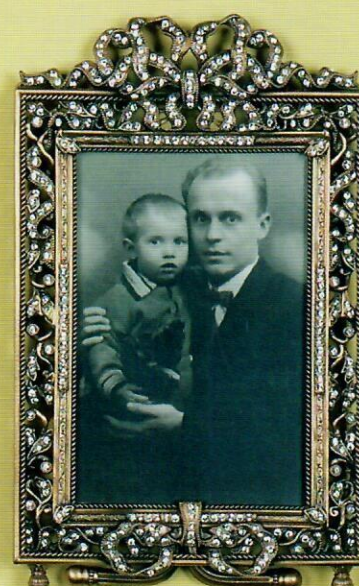
7374-3 (6" x 4") 2 Way Frame



7363-6 (5" x 3 1/2")



7363-8 (5" x 3 1/2")



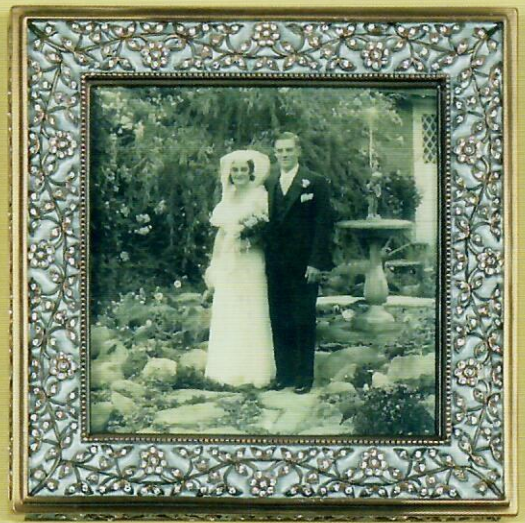
7363-1 (5" x 3 1/2")



7423-6 (5" Square)



7300-3 (5" x 3 1/2")



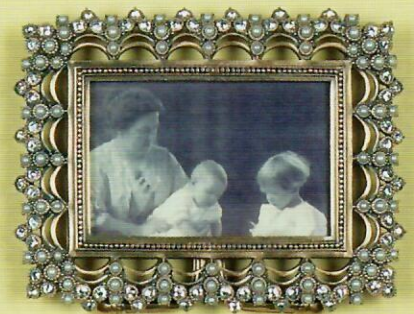
7423-7 (5" Square)



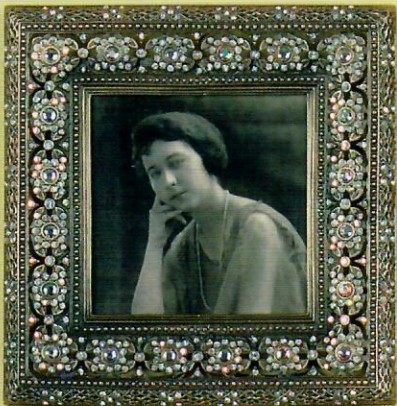
7135-5 (4" x 2 1/2")



7404-4 (7" x 5") 2 Way Frame



7135-7 (4" x 2 1/2")



4041-1 (3 1/2" Square)



4041-6 (3 1/2" Square)



7306-4 (3 1/4" x 4 1/4")



7404-3 (7" x 5") 2 Way Frame



7306-3 (3 1/4" x 4 1/4")



7466-9 (2 1/2" x 2")



7275-1 (2 3/4" x 2 1/4")



7382-1 (5" x 3 1/2")



7343-2 (5" x 3 1/2")



7276-3
(3 1/2" x 2 5/8")



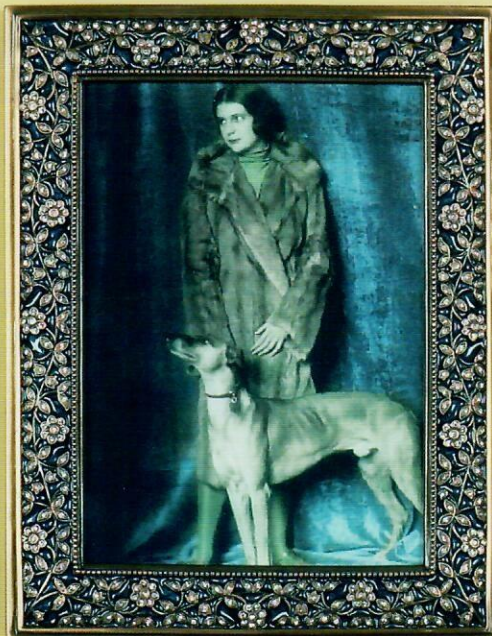
7276-9
(3 1/2" x 2 5/8")



7343-3 (5" x 3 1/2")



7378-6 (7" x 5") 2 Way Frame



7378-5 (7" x 5") 2 Way Frame



7343-9 (5" x 3 1/2")



7467-4
(1 3/8" x 1 7/8")



7467-3
(1 3/8" x 1 7/8")



7467-1
(1 3/8" x 1 7/8")



7246-1 (2 1/2" x 1 1/2")



7282-1 (3" x 2")



7378-3 (7" x 5") 2 Way Frame



7426-1 (4" x 2 3/4")



7310-3 (4 1/4" x 3")



7302-7 (5 1/2" x 3 1/2")



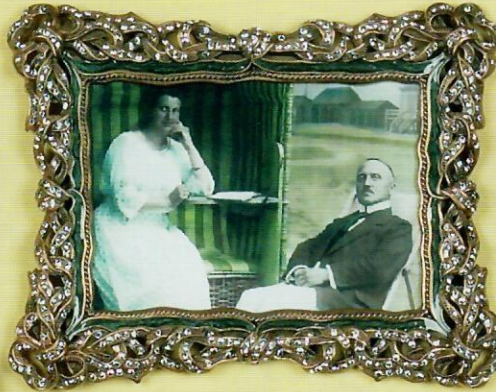
7302-9 (5 1/2" x 3 1/2")



7271-2
(2" x 1 1/2")



7271-3
(2" x 1 1/2")



7441-3 (5" x 3 1/2")
2 Way Frame



7372-1
(2 1/2" x 2")



7372-4
(2 1/2" x 2")



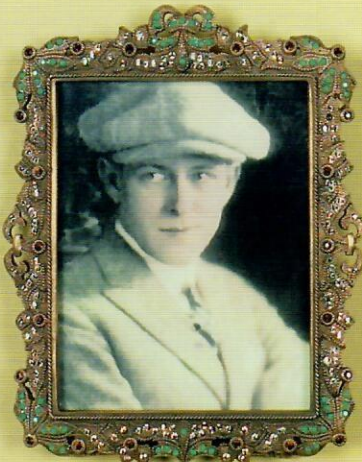
7360-5 (7" x 5") 2 Way Frame



7441-9 (5" x 3 1/2")
2 Way Frame



7059-1 (5" Square)



7303-3 (5" x 4")



7360-1 (7" x 5") 2 Way Frame



7373-3 (5" x 3")



7369-1
(2" x 1 1/2")



7369-5
(2" x 1 1/2")



7369-2
(2" x 1 1/2")



4065-7 (3 1/2" Square)



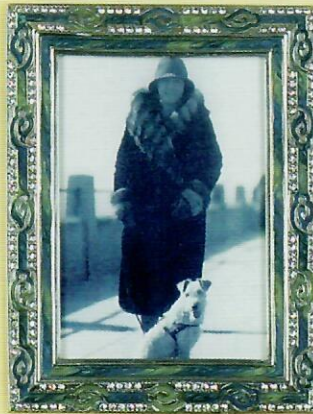
4065-6 (3 1/2" Square)



7071-1 (3" x 2 1/2")



7269-5 (2" x 2")



7077-6 (5" x 3 1/2")



7077-2 (5" x 3 1/2")



7198-1 (2 1/2" x 3")



7183-5 (3 1/2" x 4")



7260-5 (5" x 3 1/2")
2 Way Frame



7260-7 (5" x 3 1/2")
2 Way Frame



551-2
(2 3/4" Square)



4055-1
(3 1/2" x 4")



3951-7 (4 3/4" x 3 3/8")



3951-9 (4 3/4" x 3 3/8")



551-3X
(2 3/4" Square)



551-1
(2 3/4" Square)



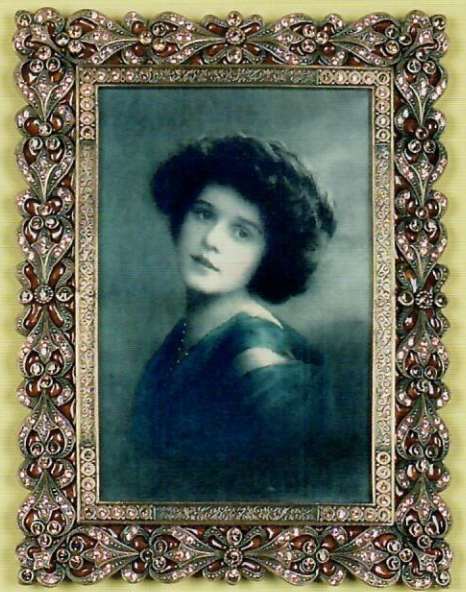
7342-2
(3" x 2 1/2")



7342-3
(3" x 2 1/2")



7288-1 (5 1/2" x 3 3/4")
2 Way Frame



7288-9 (5 1/2" x 3 3/4")
2 Way Frame



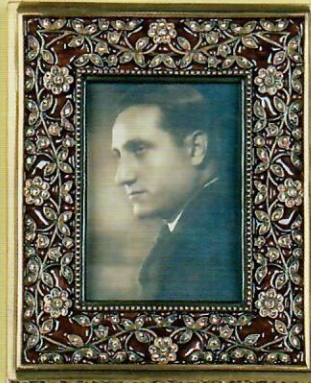
7377-3
(2 1/4" x 1 3/4")



7377-9
(2 1/4" x 1 3/4")



4067-7 (6" x 4")



7410-9 (3 1/2" x 2 3/4")



7288-3
(5 1/2" x 3 3/4")
2 Way Frame



7439-3 (7" x 5")



7439-9 (7" x 5")



7448-3
(2 1/2" x 2")



7375-6
(2" x 1 1/2")



7375-1
(2" x 1 1/2")



7375-4
(2" x 1 1/2")



3923-9 (2" Square)



7448-5
(2 1/2" x 2")



7448-9
(2 1/2" x 2")



547-5 (3" x 2 1/2")



3923-8 (2" Square)



3923-5 (2" Square)



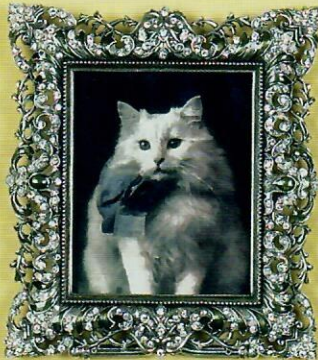
7337-9 (3 1/2" x 2 3/4")



547-2 (3" x 2 1/2")



7438-2
(5" x 3 3/4")



7337-6 (3 1/2" x 2 3/4")



547-7 (3" x 2 1/2")



7438-3
(5" x 3 3/4")



7468-9 (3 1/2" Square)



7468-3 (3 1/2" Square)



7299-5 (3" x 4")



1776-2 (3 1/2" x 5")



7436-3
(3" x 2 1/4")



7436-9
(3" x 2 1/4")



7304-1
(2 3/4" x 3 1/2")



7268-1
(2 3/4" x 1 7/8")



7470-9
(2 1/4" x 1 3/4")



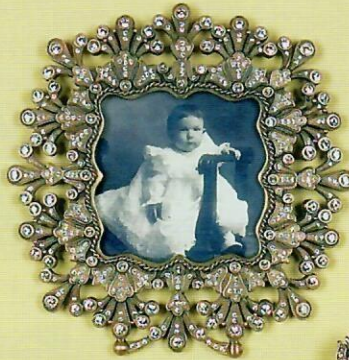
7470-6
(2 1/4" x 1 3/4")



7470-3
(2 1/4" x 1 3/4")



1007-3 (2 1/2" x 3 1/2")



7142-1
(2 1/2" Square)



7258-5
(2 1/4" x 2")



552-1
(2 1/2" x 3 1/4")



1019-7
(2 1/4" Square)



7475-9
(1 3/4" x 1 1/2")



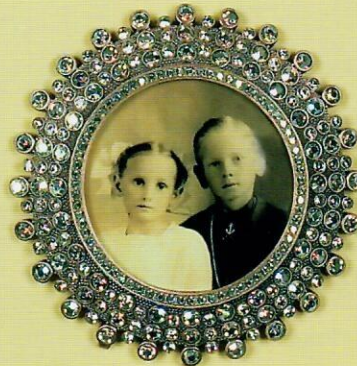
7475-3
(1 3/4" x 1 1/2")



7376-3 (5 1/2" x 4")



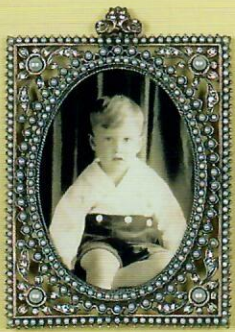
7296-7 (3" Square)



1021-9 (3" Square)



7294-7
(4" x 3")



3950-7
(3 1/4" x 2 3/8")



401-2
(3" Square)



401-3
(3" Square)



7278-5
(2 1/4" x 2 3/4")



7286-3 (3 1/4" Square)



7284-9
(4" x 2 1/2")



7284-6
(4" x 2 1/2")



7457-2 (8" x 10") 2 Way Frame



7458-6 (6" x 4") 2 Way Frame



7458-2 (6" x 4") 2 Way Frame



7457-3 (8" x 10") 2 Way Frame



7140-7 (8" x 10")



7459-3 (8" x 10") 2 Way Frame



7072-7 (8" x 10")



7459-1 (8" x 10") 2 Way Frame



7293-3 (3 1/4" x 4 1/4")



7357-3 (3" x 3 1/4")



7293-2 (3 1/4" x 4 1/4")



7357-8 (3" x 3 1/4")



7357-5 (3" x 3 1/4")



7471-3
(2" x 1 5/8")



7471-2
(2" x 1 5/8")



7492-2
(2" x 1 1/2")



7368-3
(1 3/4" x 1 1/2")



7368-6
(1 3/4" x 1 1/2")



7474-9
(3" x 2 1/4")



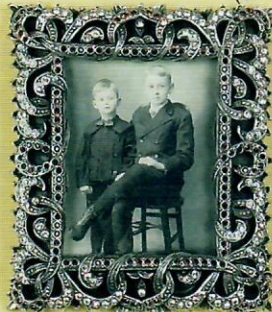
7492-1
(2" x 1 1/2")



7277-3
(3" x 2")



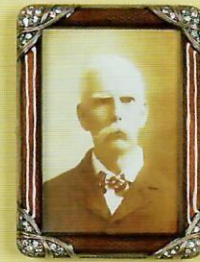
7305-3
(3" x 2 1/8")



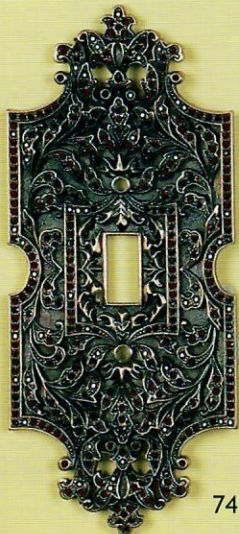
7474-6
(3" x 2 1/4")



7474-3
(3" x 2 1/4")



7277-9
(3" x 2")



7450-2



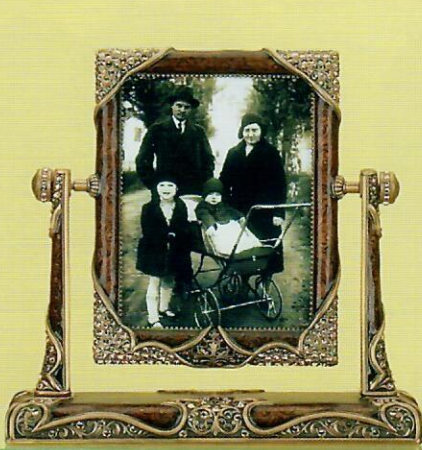
7450-1



7450-3



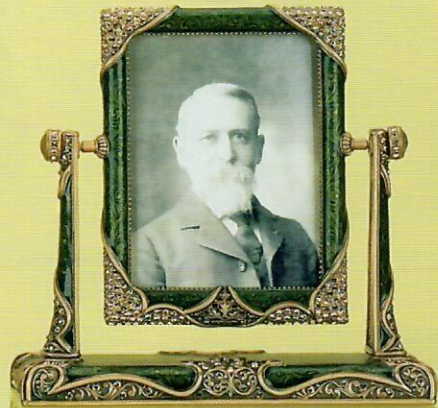
7225-3



7351-9 (4" x 3")



7437-9 (4" x 3")



7351-3 (4" x 3")



1002-1



3907-7
(1 1/2" x 1")



7248-9
(2" Square)



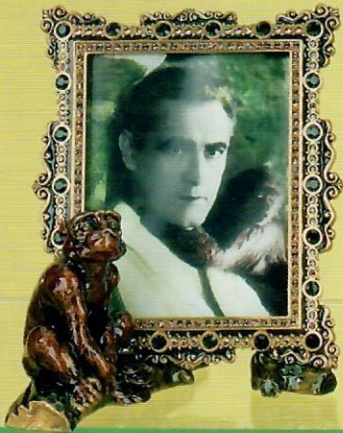
4032-1 (4" x 3 1/2")



7307-1
(2" Square)



7132-3 (4" x 3")



7479-9 (4 1/4" x 3 1/4")



4035-9 (3 1/4" x 2 1/4")



7420-9



7301-9 (2" x 2 1/4")



7289-7



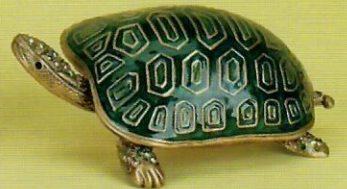
7235-3



7333-1



7255-2



7213-3



7217-3



7226-1



7435-1



1050-2



7243-2



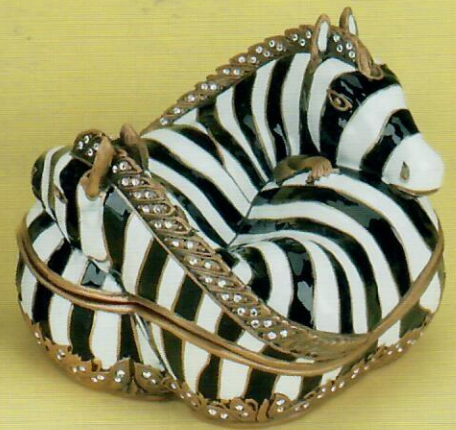
1050-3



7361-1



7429-2



7359-1



Lamp Finials

7414-2 Fish Finial Not Shown
Tangerine Crystal, Museum Gold



7407-9



7407-1



7407-3



7415-2



7419-9



7383-3



7412-1



7408-3



7408-9



7408-2



7409-2



7409-5



7409-3



7411-9



7394-9



7397-3



7392-3



7401-9



7401-2



7401-3



3791-1



7136-7



4040-1



379-2

379-5



7242-2



7234-2



7338-9



7224-2



7229-1



1136-8



4049-6



4049-1



1140-2



3806-5



4025-2



840-9



7319-8



3805-3



7285-1



7172-3



7341-3



7371-5



4050-2

7425-3



7427-5

7336-2



7358-4



7464-2



7113-4



7391-1



7344-2



7250-9



7327-9



7348-2



7348-3



7348-6



7345-2



7349-2



7349-3



7349-5



7210-3



7147-3



7155-1



7210-5



7210-9



7210-2



7210-1



7144-3



7148-9



7346-2



7346-3



7346-1



7346-9



7346-6



7158-9



7156-2



7149-1



7153-9



7146-1



7143-2



7145-9



7353-1



7320-1



7353-3



7320-3



7353-2



7320-2



3566-1



7180-1



7321-9



7354-1



7334-3



7192-3



7078-1



387-8



387-9



7078-2



387-1



7078-5



7442-3



7402-9



7442-9



7417-2



7385-9



7380-3



7380-9



7331-3



7331-7



7331-2



7332-2



7332-3



7332-5



7326-5



7326-2



7326-3



7085-2



7085-3



7085-8



7182-4

7182-3

7182-2



7122-8



7122-5



7122-3



7329-8



7329-3



7073-8
White Wine Only

NOTE: NOT PHOTOGRAPHED 7329-4 MILAN, PALE IRIS, CRYSTALS, MUSEUM GOLD

Edgar Berebi designs can be found in many of the finest homes and collections worldwide. They are appreciated for their old world details and timeless beauty. Edgar has carried on the tradition of meticulous and detailed engraving in each of his creations... a tradition that is all but lost in this day and age. Connoisseurs of fine antiques recognize this quality in his work and have always been his most avid and appreciated collectors. Edgar and his wife, Jenny, both antique collectors, have strived to achieve this peak of quality in their work. All work is either silver plate or 24kt plate. The five time plating process is painstakingly rendered into a "natural" hand-rubbed patina. The stones are faceted Swarovski™ Austrian crystals. Each piece is not designed for the trend of the moment. It is Edgar's and Jenny's sincere wish that each piece will look classic and timeless when it is passed into the next generation, just like a fine antique.

Attention conservators and fine art collectors.

Edgar Berebi frames use polycarbon glass in all of their frames which meets or exceeds museum and conservation standards.

Why is polycarbon glass used and preferred by museums and collectors?

Polycarbon glass is the material of choice used by conservators and museum frame shops who must insure the preservation of precious photos and prints for future generations. Vitreous glass is not recommended as it sometimes forms condensation both inside and outside the frame due to changes in the temperature and humidity (much like your bathroom mirror). This moisture, in a fairly short time, will cause discoloration (foxing) and other deterioration in your precious photos and prints. Polycarbon glass will preserve your keepsakes for generations to come.

Copyright notice:

This catalog remains the property of Edgar Berebi and must be surrendered on demand.

©BEREBI

EDGAR, INC.

P.O. BOX 419 BARRINGTON, RI 02806

401-247-7900 FAX 401-247-2252

Email ebframes@aol.com

- FOB PROVIDENCE, RI
- OPENING ORDERS MUST BE PREPAID. WE ACCEPT COMPANY CHECKS, VISA, MASTERCARD, AND AMERICAN EXPRESS.
- MERCHANDISE REFUSED OR RETURNED IS SUBJECT TO A 20% RESTOCKING FEE PLUS SHIPPING CHARGES.
- ALL RETURNS REQUIRE AN RA# AND PRIOR APPROVAL
- ALL PRICES ARE SUBJECT TO CHANGE WITHOUT NOTICE
- ITEMS ARE BILLED AT PRICES IN EFFECT AT THE TIME OF SHIPMENT
- RETAIL OPERATION MUST BE A STOCK KEEPING STORE FRONT OR PRE-APPROVED INTERIOR DECORATORS, MUSEUMS, OR CORPORATE INCENTIVE BUYERS. PREAPPROVAL IS DONE SOLELY BY EDGAR, INC.
- EDGAR, INC. SEEKS INJUNCTIVE RELIEF INCLUDING PROSECUTION OF ANY PARTY THAT SUB-DISTRIBUTES.

EAST COAST: ISADORA & MIZRAHI, 225 5TH AVE., #535, NYC, NY 10010, 212-447-0611/FAX 212-447-0614, 1-800-542-8689
WEST COAST: QUADRILLE, 1933 SOUTH BROADWAY, #111, LA, CA 90007, 213-746-3222/FAX 213-746-4525, 1-800-796-6662
SOUTHWEST: DONALD MCEVOY, LTD., 211 DALLAS WORLD TRADE CENTER, DALLAS, TX 75342, 214-744-4693
FAX 214-748-8461 WEBSITE: www.donaldmcevoyltd.com
SOUTHEAST: D. GABER & ASSOC., #829A ATLANTA GIFT MART, 230 SPRING ST., ATLANTA, GA 30303, 1-800-347-0857
FAX 770-326-9442
MIDATLANTIC: SILVERSTEIN MKTG LTD., 301-774-7285/FAX 301-774-6328
SAN FRANCISCO: MARY HADA, 888 BRANNAN, #535, SAN FRANCISCO, CA 94103 415-552-8720/FAX 1-800-888-3254

ALL EDGAR BEREBI PRODUCTS ARE PROTECTED BY U.S. AND INTERNATIONAL COPYRIGHT LAWS. ANY DUPLICATION, DERIVATION OR OTHER INFRINGEMENT OF OUR INTELLECTUAL PROPERTY INCLUDING THE MANUFACTURING, IMPORTING, MARKETING OR PROMOTION OF INFRINGED PRODUCT, REGARDLESS OF WHETHER IT IS COMMITTED BY FIRST, SECOND, OR THIRD PARTIES, WILL RESULT IN CIVIL AND/OR CRIMINAL PROSECUTION TO THE FULLEST EXTENT OF THE LAW.